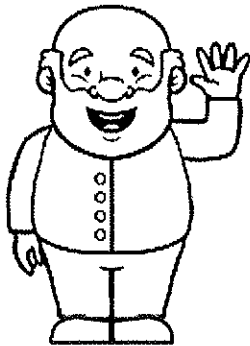


**Let's move on**

**g b g b | a - a - | b b b b | a - a - |**

**g b g b | a - a - | g a b a | g - g -||**



**Congratulations!**

**You are finished your  
whistle book for this year.**



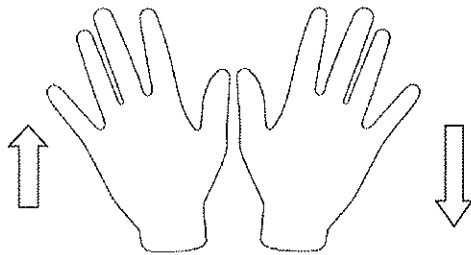
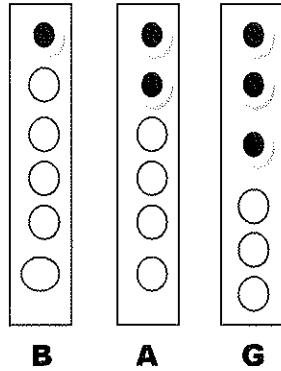
*Bunscoil Loreto*

*Learn to play the whistle*

*Junior Infants*

*© Aileen Kennedy 2014*

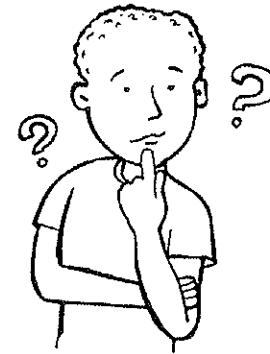
**Notes to learn for this booklet**



**Remember to use your left hand for the top three notes.**

**It's a mystery!**

**g g a b | a - g - | g g a b | a - a - |**  
**g g a b | a - g - | a a a b | g - g - ||**



**Don't start until teacher says.**

**b a g | b a g | a b a | g - - |**  
**b a g | b a g | a b a | g - - ||**

### So far so good

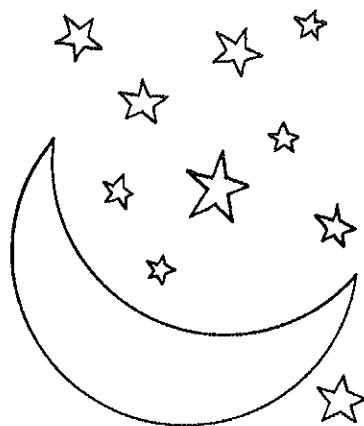
**b b a g | a - b - | a a a b | a - a - |**

**b b a g | a - a - | g g a a | g - g - ||**

### Au Clair de la Lune

**g g g a | b - a - | g b a a | g - - - |**

**g g g a | b - a - | g b a a | g - - - ||**



### The b Tune

**b b b - | b b b - |**

**b b b b | b b b - ||**

### The a Tune

**a a a - | a a a - |**

**a a a a | a a a - ||**

**baa!**

**b a b b | a a a - |**

**b a b b | a a b - ||**

## The g Tune

g g g - | g g g - |  
g g g g | g g g - ||

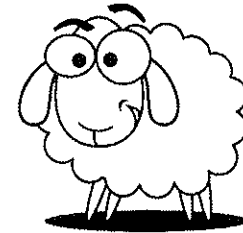
## The gaa Tune

g g a a | g a g - |  
a a g g | a a g - ||



## Mary had a little lamb.

b a g a | b b b - | a a a - | b b b - |  
b a g a | b b b - | a a b a | g - g - ||



## Hot Cross Buns

b a g - | b a g - |  
g g g g a a a a | b a g - ||



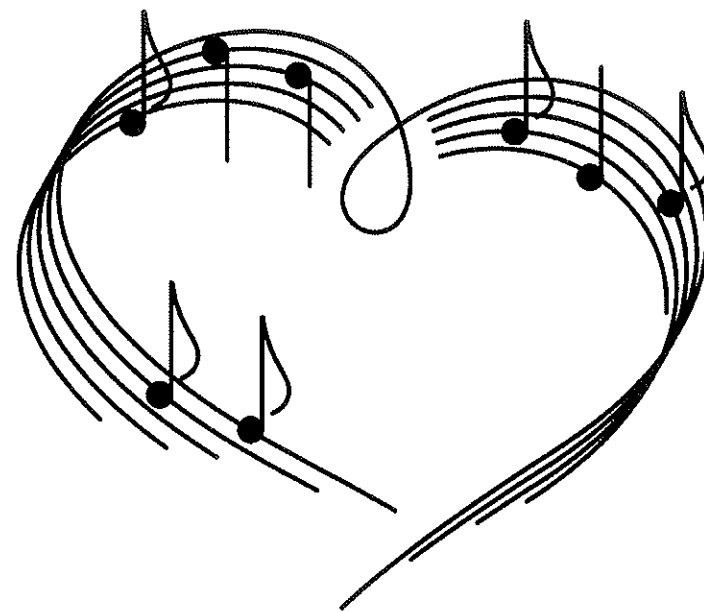
**Are you sleeping?**

d e f# d | d e f# d | f# g a - | f# g a - |  
ab ag f# d | ab ag f# d | d a d - | d a d - ||



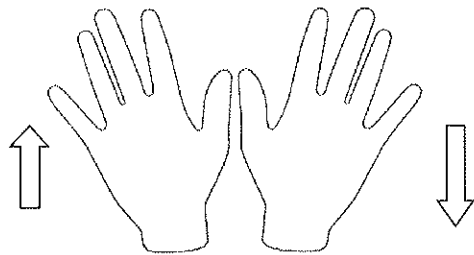
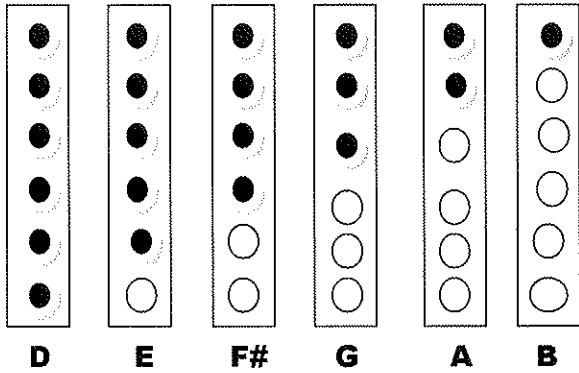
**Au Clair de la Lune**

g g g a | b - a - | g b a a | g - - - |  
g g g a | b - a - | g b a a | g - - - |  
a a a a | e - e - | a g f# e | d - - - |  
g g g a | b - a - | g b a a | g - - - ||



*Bunscoil Loreto*  
*Learn to play the whistle*  
*Senior Infants*

## Notes to learn for this booklet



Remember to use your left hand for the top three notes.

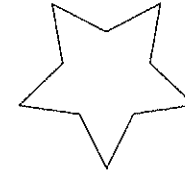
## Twinkle, twinkle little star

d d a a | b b a - | g g f# f# | e e d - |

a a g g | f# f# e - |

a a g g | f# f# e - |

d d a a | b b a - | g g f# f# | e e d - ||



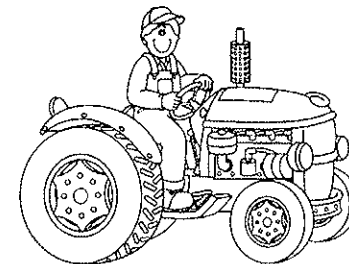
## Old McDonald

g g g d | e e d - | b b a a | g - - - |

g g g d | e e d - | b b a a | g - - - |

g g g - | g g g - | g g g g | g g g - |

g g g d | e e d - | b b a a | g - - - ||



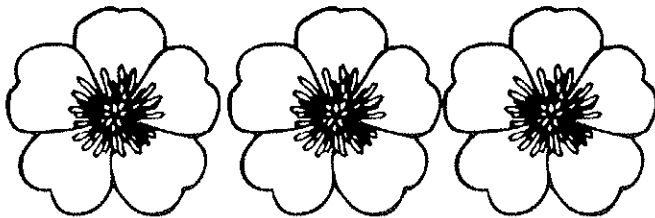
Ode to Joy

F# F# G A | A G F# E | D D E F# | F# - E E - |  
 F# F# G A | A G F# E | D D E F# | E - D D - |  
 E E F# D | E F# G F# D | E F# G F# E | D E A - |  
 F# F# G A | A G F# E | D D E F# | E - D D - ||



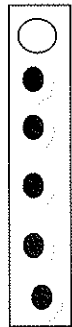
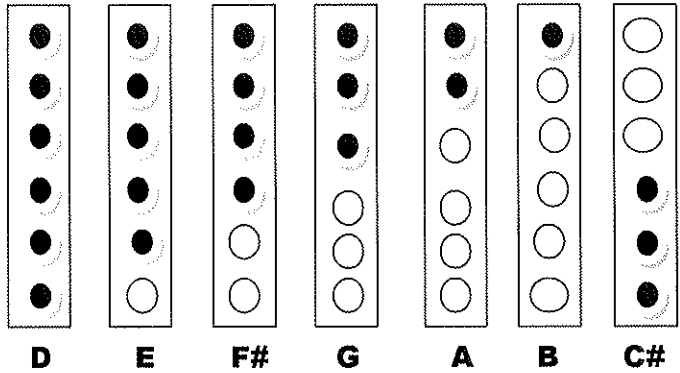
The Three Flowers

F#G | A A F# D' | C# C# E -F# | G E D D | D - -  
 F#G | A A B C# D' | E' E' F# -E' | D' B' A B C# | D' - -  
 F#G | A A B C# D' | E' E' F# -E' | D' B' A B C# | D' - -  
 F#G | A A F# D' | C# C# E -F# | G E D D | D - - ||

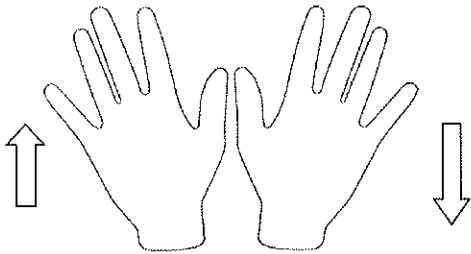


*Bunscoil Loreto*  
*Learn to play the whistle*  
*First Class*

## Notes to learn for this booklet



D'



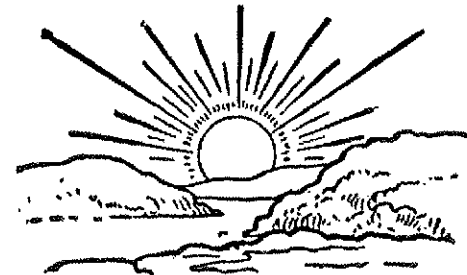
Remember to use your left hand for the top three notes.

## Kerry Polka

B D E D | B D E D | G - A - B | A G E D |  
 B D E D | B D E D | G - A - B | A G G - :||  
 B D' B A | A G E D | G - A - B | A G E D |  
 B D' B A | A G E D | G - A - B | A G G - :||

## Dawning of the Day

D E | F# F# F# E F# | A A B A F# | D E D D | D - -  
 A | B - A B D' | F# - E D F# | A F# D' F# | E - -  
 A | B - A B D' | F# - E D F# | A F# D' F# | E - -  
 D E | F# F# F# E F# | A A B A F# | D E D D | D - - ||





**Lucy Farr's Barndance**

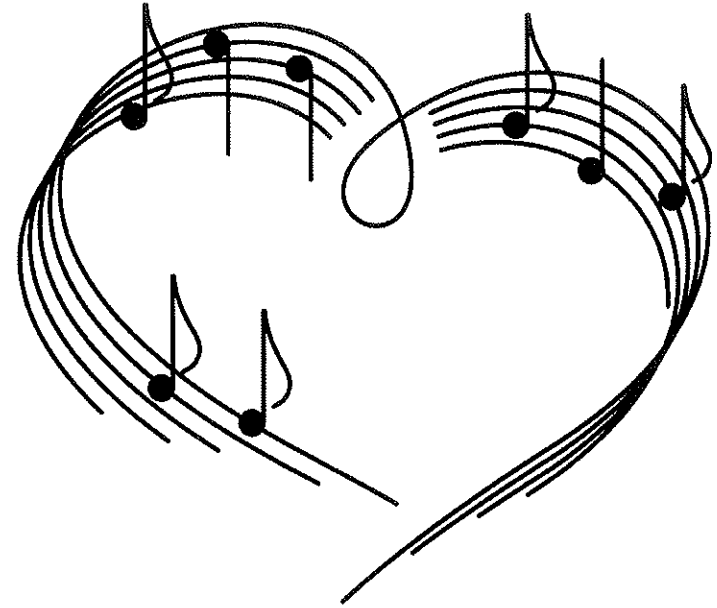
DE | F# F# F#E DF# | A A A F#A | B B BF# DE | F# E E  
DE | F# F# F#E DF# | A A A F#A | D'C# BA BA F#E | F# D D :||  
C# | D' D' D' C#D' | E' E' E' F#E' | D'E' F#G' A'G' F#E' | F# B B  
C# | D' D' D' C#D' | E' E' E' F#E' | D'C# BA BA F#E | F# D D :||  
E | F# DF# A F#A | B GB A DE | F# DF# A F#A | B E E  
DE | F# DF# A F#A | B GB A F#A | D'C# BA BA F#E | F# D D :||

**Polka Gan Ainm**

D - E F#A | BC# D' | BA F#A | BA F#E |  
D - E F#A | BC# D' | BA F#E | D D :||  
D' - C# BA | BC# D' | BA F#A | BA F#A |  
D' - C# BA | BC# D' | BA F#E | D D :||

**The Foggy Dew**

BD' | E' D'B E' D'B | A B D EF# | GB AG E E | E - -  
BD' | E' D'B E' D'B | A B D EF# | GB AG E E | E - -  
EF# | G B D' CB | A A B GA | B G'F# E'D' BD' | E' - -  
DB' | E' D'B E' D'B | A B D EF# | GB AG E E | E - -



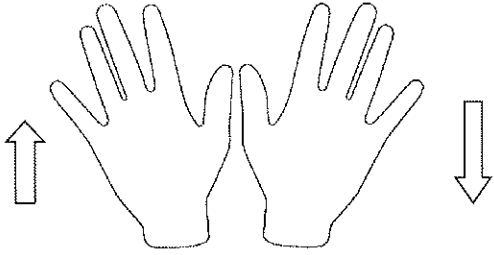
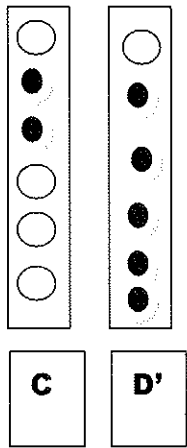
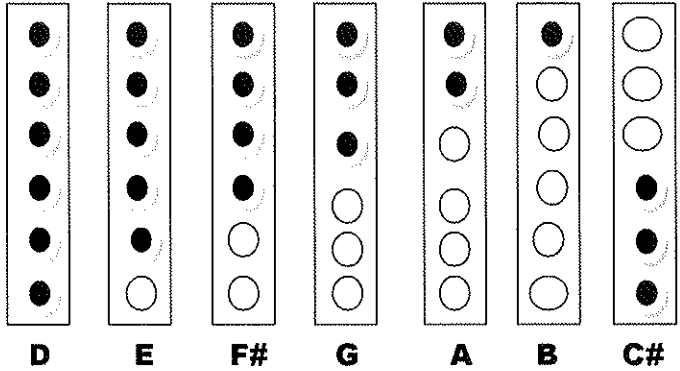
*Bunscoil Loreto*

*Learn to play the whistle*

*Second Class*

© Aileen Kennedy 2014

# Notes to learn for this booklet



Remember to use your left hand for the top three notes.

## Deirdre's Fancy Slip Jig

E-F# G-A BGE | D-E F#-G AF#D |  
 E-F# G-A BGE | BCB AGF# E - - :||  
 E'BE' E'-F#' G'F#'E' | D'AD' D'-E' F#E'D' |  
 E'BE' E'-F#' G'F#'E' | D'CB AGF# E - - :||

## The Bells of the Angelus

D | G G B | G G B | A A BA | G -  
 D | G G B | G G B | A A BA | G -  
 G | C - C | B - B | A A BA | D' -  
 B | C - C | B - B | A A BA | G - ||

## The Bells of the Angelus Harmony

D' | B B D' | B B D' | C C D'C | B -  
 D' | B B D' | B B D' | C C D'C | B -  
 G | E' - E' | D' - D' | C C D'C | B -  
 G | E' - E' | D' - D' | C C D'C | B - ||



**Mo Ghile Mear**

D - Ḋ D E | G A B - | C B A B - Ȧ | G E D - |  
G - F# E D | G A B C | D' - E' D' B | A G G - ||  
B D' D' B | A G G - Ȧ | B D' D' B | A G A - |  
B D' D' B | A G G A B | C B A B - Ȧ | G E D - ||

**Hush Little Baby**

D B B B C | B A A A - |  
D D A A A B | A G G - |  
D B B C | B A A - |  
D D A A A B | A G G - ||



**The Spanish Lady**

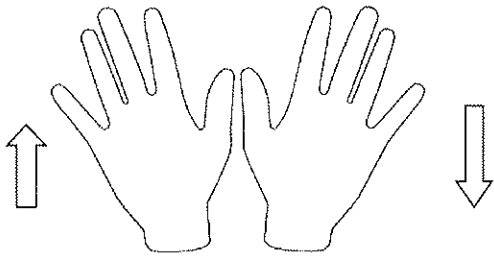
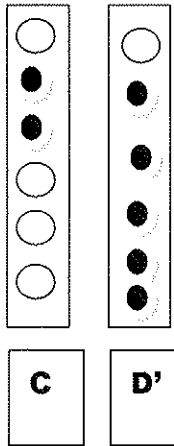
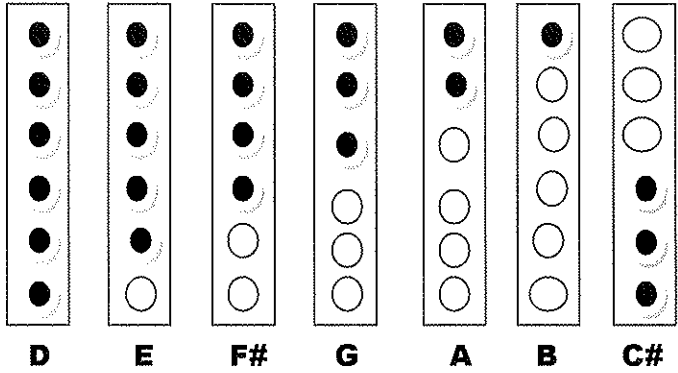
D D D E | G G G A B | C A B G | E D D - |  
D D D E F# | G G G A B | C A B G | E D D - |  
B D' D' B | A G G A | B D' D' B | A G A - |  
B D' D' B | A G G A B | C A B G | E D D - ||



*Bunscoil Loreto*  
*Learn to play the whistle*  
*Third Class*

© Aileen Kennedy 2014

# Notes to learn for this booklet



Remember to use your left hand for the top three notes.

## Inis Oirr

D | B BA BD' | B BA BD' | E EB AB | D DB AG |  
 B BA BD' | B BA BD' | G GB AGF# | G - :||  
 BD' | E' E'F# E'D' | B BA BD' | E'F# E'D' BD' | E' -D' BD' |  
 E' E'F# E'D' | B BA BD' | G GB AGF# | G - :||

## Return from Fingal

B GF# EF# GA | B GF# E -B | AG F#A D' A | B A BC# D'E' |  
 B GF# EF# GA | B GF# E -B | AG F#A D' AB | F# E E - :||  
 F# E' E' D'C# | B A D' -A | B A D' -A | B A BC# D'E' |  
 F# E' E' D'C# | B A D' -B | AG F#A D' AB | F# E E - :||

## Maggie in the Wood

GD GA | BD' E' | D'B AG | BA A |  
 GD GA | BD' E' | D'B AB | G G :||  
 G'F# E'D' | BD' E' | D'B AG | BA A |  
 G'F# E'D' | BD' E' | D'B AB | G G :||



**The Star of the County Down**

F#A | B B B AB | D' D' E' D'E' | F# E'D' B AF# | A -- F#A |  
B B B AB | D' D' E' D'E' | F# E'D' B B | B -- F# |  
A' F# F# E'D' | E' E' E' D'E' | F# E'D' B AF# | A -- F#A |  
B B B AB | D' D' E' D'E' | F# E'D' B A | B -- ||

**Botany Bay**

D | D BB B A | G E - D' | E' E'E' E' D' | B -- D |  
D BB B A | G F# E G | A AA A B | A -- DD |  
D B B A | G E - D' | E' E' E' D' | B -- B |  
B E E GA | B A G GA | B A G F# | E -- ||

**Song of the Chanter**

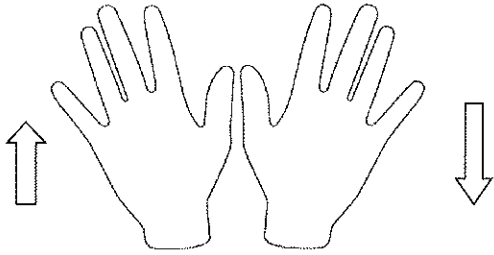
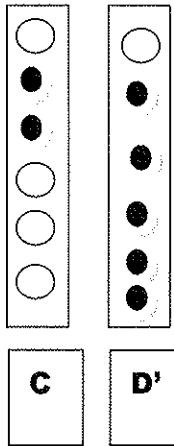
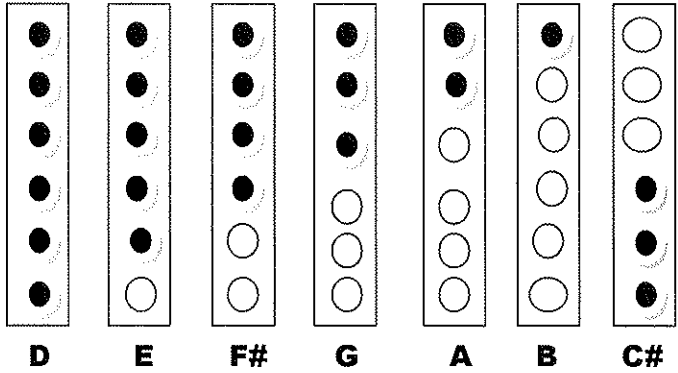
D D A GE | D D C BC | D' A A GE | C BC A GE |  
D D A GE | D D C BC | D' A A GE | D DE D - |  
A-G AB C-B CB | A-G AB C BC | D' A A GE | C BC A GE |  
D D A GE | D D C BC | D' A A GE | D DE D - ||



*Bunscoil Loreto*  
*Learn to play the whistle*  
*Fourth Class*

© Aileen Kennedy 2014

# Notes to learn for this booklet



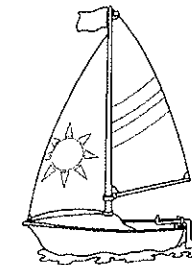
Remember to use your left hand for the top three notes.

## Absent Friends

GA | B - - AG | A - - F#G | A - D' - F# | F# G - EF# |  
 G - - DEF# | G - - EF# | G - F# G - A | B A - - :||  
 F#E | D - D' CB | G - - ED | D - D'E' CB | G - - BA |  
 G - - BA | G - - EF# | G - F# G - A | B A - - :||

## Out on the Ocean

D-B BAG | BD'B ABA | GED G-A | BD'B AGE |  
 D-B BAG | BD'B ABA | GED G-A | 1. BGF# GF#E :||  
 2. BGF# GBD' ||  
 E'F#E' E'D'B | E'F#E' E'D'B | D'E'D' D'E'F# | G'F#E' D'BA |  
 G-A B-D' | E'G'E' D'BA | GED G-A | 1. BGF# GBD' :||  
 2. BGF# G - - ||



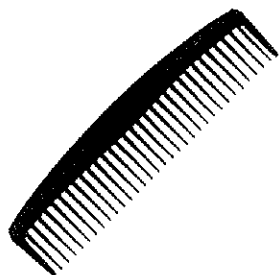
Comb your hair and curl it.

G-B E-B BAG | F#-A D-A AGF# |

G-B E-B BAG | BD'B AGF# E - - :||

E'BE' E'-F# G'F#E' | D'AD' D'-E' F#E'D' |

E'BE' E'-F# G'F#E' | D'CB AGF# E - - :||



### The Boys of Bluehill

D'B | BA F#A D F#A | BA BD' E' D'E' | F#A' A'F#'  
E'G' F#E' | D'F# E'D' B D'B |

BA F#A D F#A | BA BD' E' D'E' | F#A' A'F# E'G'  
F#E' | D' D'C# D' :||

F#G' | A'F# D'F# A' G'F# | G'F# G'A' B' A'G' | F#A'  
A'F# E'G' F#E' | D'F# E'D' B' D'B |

BA F#A D F#A | BA BD' E' D'E' | F#A' A'F# E'G'  
F#E' | D' D'C# D' :||



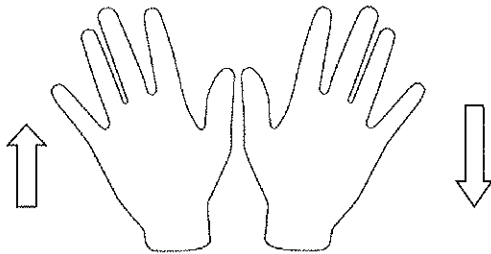
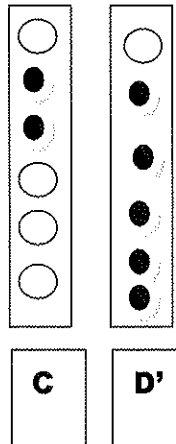
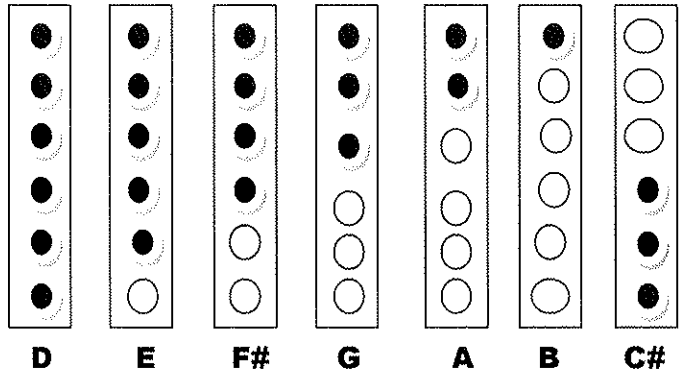
### Bunscoil Loreto

Learn to play the whistle

Fifth Class

© Aileen Kennedy 2014

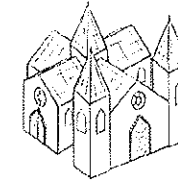
## Notes to learn for this booklet



Remember to use your left hand for the top three notes.

## Christchurch Cathedral

**BA BC D' G | G A F# G | EF# G D G | C BG B A |**  
**BA BC D' G | G A F# G | EF# G D G | GA F# G - :||**  
**F#E F#G A D | D A A G | BA BC D' BG | C BG B A |**  
**BA BC D' G | G A F# G | EF# G D G | GA F# G - :||**



## Ag Criost an Siol

**F#G | A - D' | D' - E'D' | C - BG | A - A |**  
**B - A G | A - BA | G - F#G | A - F#G |**  
**A - D' | D' - E'D' | C - BG | A - A |**  
**B - A G | A - BA | G - F#G | A - F#G |**  
**A - D'E' | F# - E'F# | G' - F#D' | E' - E'D' |**  
**C - CB | A - B | C - BG | A - F#G |**  
**A - D' | D' - E'D' | C - BG | A - DE |**  
**F# F# G | A - EF#E | D - E | D - ||**



**Amhrán na bhFiann**

D' -E' F# D' | A - - A | B -B G B | A -B A - |  
D' - C# - | B - - C#D' | E' -F# E' B | C# - - - |  
D' -E' F# D' | A - - A | B -B G B | A -B A -B |  
C# - C# -C# | C# C# B -A | A - - A | G -F# GE F#G |  
A -B A D' | C# B C# B | A G E A |  
F# DF# A -A | BC# D'E' F# D'B |  
A D' -F# E' -D' | D' - - - ||

**Eleanor Plunkett - Turlough O Carolan**

GA | B B AG | G G A'G' | E' E' E'D' |  
B - AG | E A AB | A - ||  
G'A' | B' A'G' E'D' | E' - E'F# | G' G' B' |  
A' B'A' G'F# | G' A'G' F#E' | D' B D' | E' G' G |  
B - AG | E A AB | A - ||



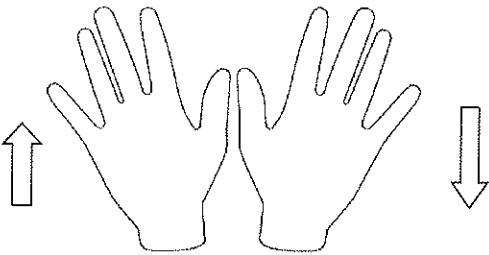
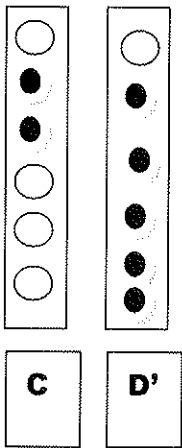
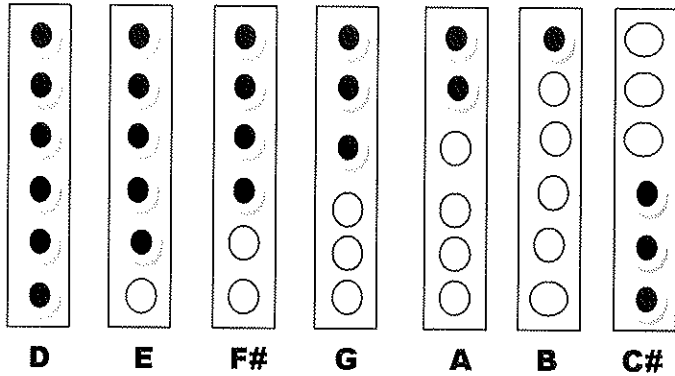
*Bunscoil Loreto*

*Learn to play the whistle*

*Sixth Class*

© Aileen Kennedy 2014

# Notes to learn for this booklet



Remember to use your left hand for the top three notes.

## I'll tell me Ma

D G B - Ḃ | C B B - Ḃ | B A A - Ḃ | A G G - |  
 D G B - Ḃ | C B B - Ḃ | B A A - Ḃ | A G G - |  
 D' D' D' B | C C C A | B B B G | A F# E D |  
 D' D' D' B | C C C D' C | B G A F# | G G G - ||

## The Grand Old Dame

D' A F# A | D' D' D' C#D' | E' D' C# D' | E' F# G' F#G' |  
 A' F# G' E' | D' C# A F# | G B AB AG | F# D D - :||  
 F# F# F# D' | G' G' G' E' | F# F# F# A' | G' F# E' F#G' |  
 A' F# G' E' | D' C# A F# | G B AB AG | F# D D - :||

